



MAIN NEEDS TO ENSURE A SECURED LOGISTIC CHAIN FOR COVID-19 VACCINES



STOCK CONTROLS

from spot checks to real time inventories



COLD CHAIN ASSURANCE

complex cold chain conditions (until -70°C) with high risk of failures



SINGLE CONTROL TOWER

single digital hub to control the entire logistic chain



ONE TURNKEY SOLUTION

simplified process with one single point of contact



DOCUMENTS' REVIEW

need to control legal procedures during the various changes of custody



RISK REDUCTION

risk alerts to make the necessary corrective actions

AN INTEGRATED SOLUTION DEVELOPED BY TWO GLOBAL LEADERS



**GLOBAL LEADER IN
PHARMA
SUPPLY CHAIN TRACK &
TRACE
PLATFORMS AND
TRACK & TRACE PLATFORM**



**BUREAU
VERITAS**

**GLOBAL LEADER IN SUPPLY
CHAIN ASSURANCE AND
COVID HYGIENE PROTOCOLS
AUDITS**

SUPPLY CHAIN ASSURANCE

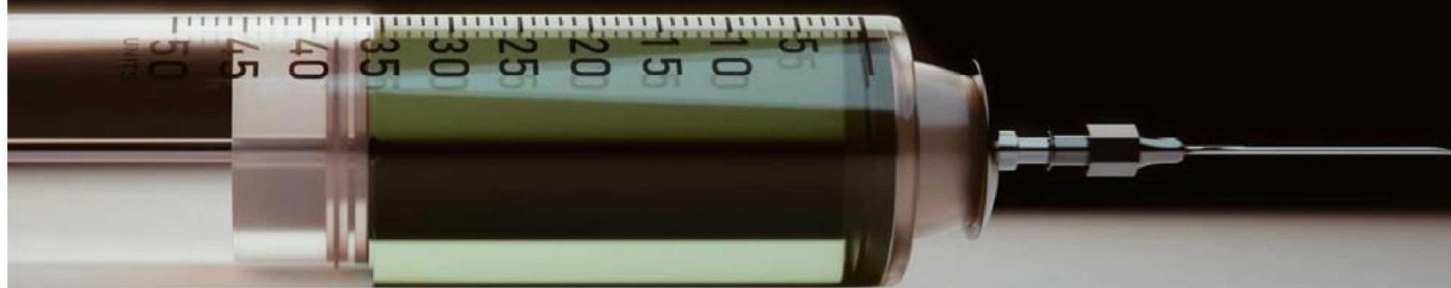




**Track and trace COVID -19
vaccines
anytime and anywhere**

&

**Mitigate the risks
along the logistic chain**





Track and Trace platform
providing visibility along the supply chain

Consolidation of comprehensive data
in a unique control tower

Inspection services all along the logistic chain
to control inventories and ensure compliance
of storage and transport conditions

Project Management Assistance
to support you in the monitoring of the whole
logistic chain



VALUE PROPOSITION

ASSURED TRACEABILITY FOR CORONAVIRUS VACCINE



VISIBILITY

Control your vaccine orders
all along the logistic chain in one single
control tower,
ensuring the traceability of all batches of
vaccines



TRACK & TRACE PLATFORM



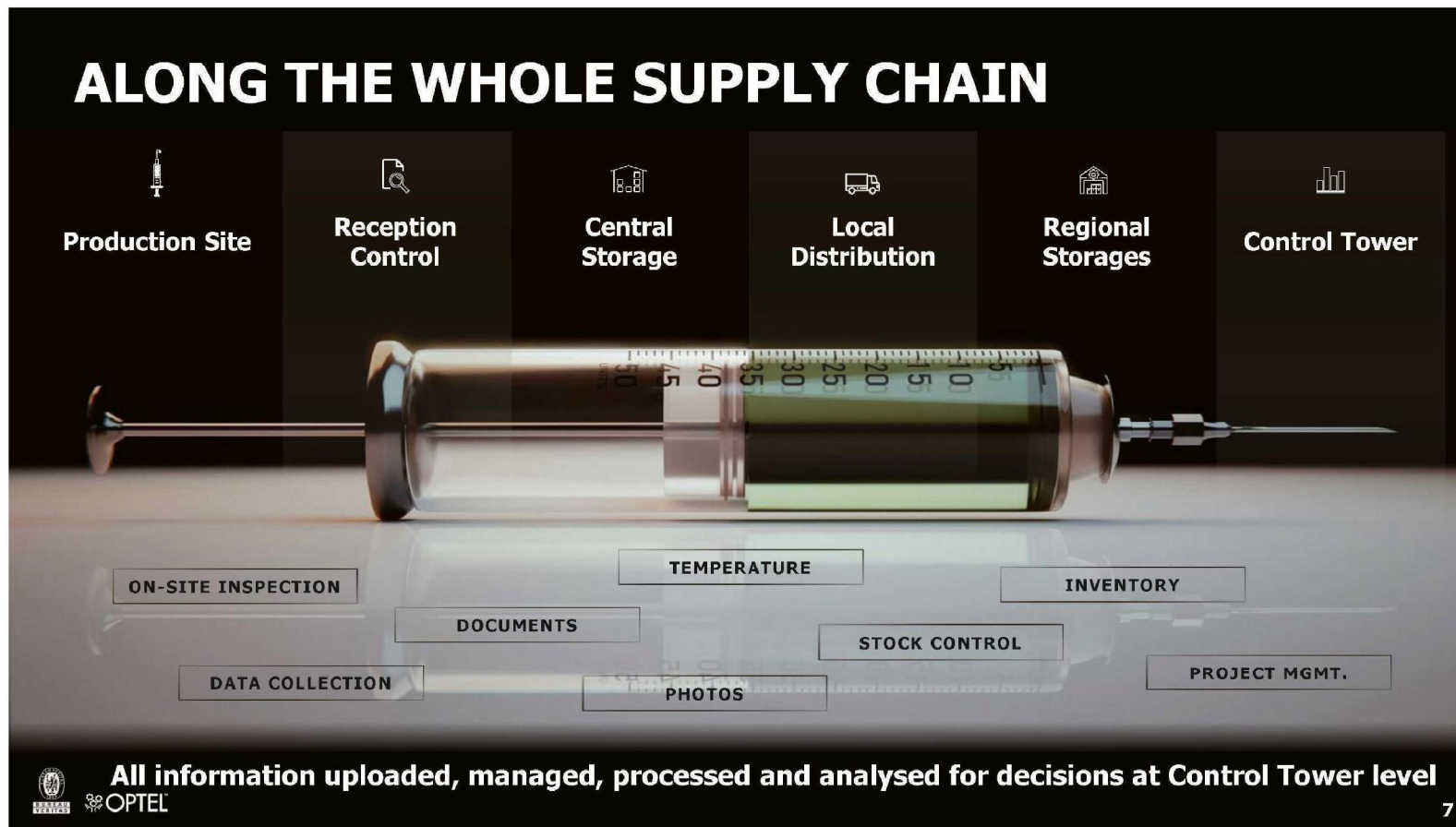
ASSURANCE

Get real information about
conditions, status and compliance of
your vaccines' batches on site.
Be sure that your vaccines are well
stored, transported and conserved



SUPPLY CHAIN ASSURANCE





ON-SITE INSPECTION

**Global presence with 190 years of experience
in audits, inspection and certification**

- **Dedicated check-lists** for ordinary or special inspection
- **Photos** from the field
- **Documents** control / Upload
- **Scheduling** Control
- **Lot condition** monitoring
- **Packing** verification
- **Storage condition** at Ports & Airports



All information collected electronically and uploaded for secure online a



ASSURED COLD CHAIN

Temperature verified and reported alongside the supply chain...

Central control to monitor results and trigger alerts for any deviation



STOCK CONTROL & INVENTORY

Storage condition verification

Stock control with traceable ins & outs

Inventory verification

Online consolidation and reports



PROJECT MANAGEMENT ASSISTANCE

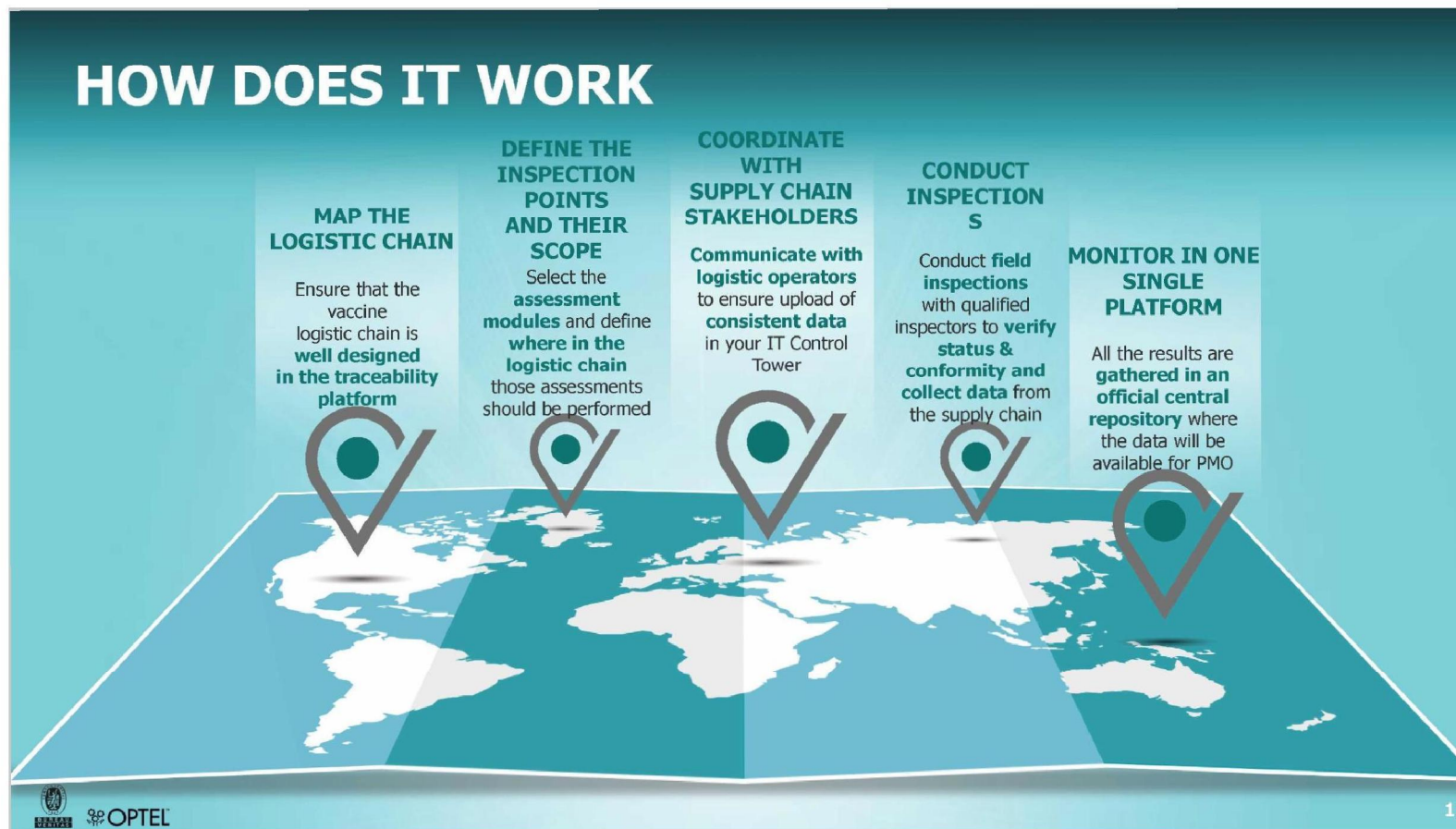
Data Analysis and Reporting

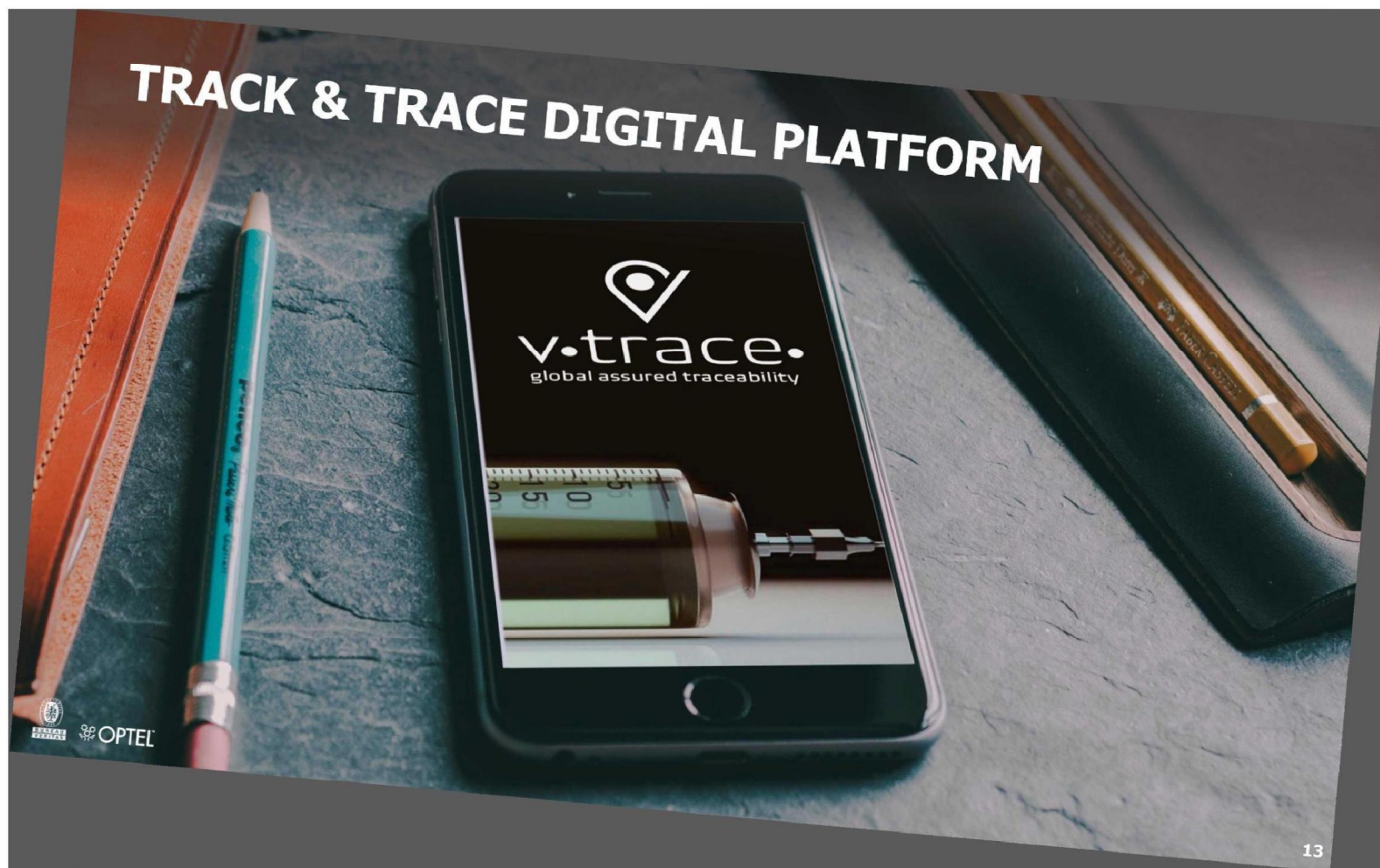
Alarms for critical deviations

Scheduling control

Monitoring of corrective actions







TRACK AND TRACE PLATFORM

Quick deployment of the MVP

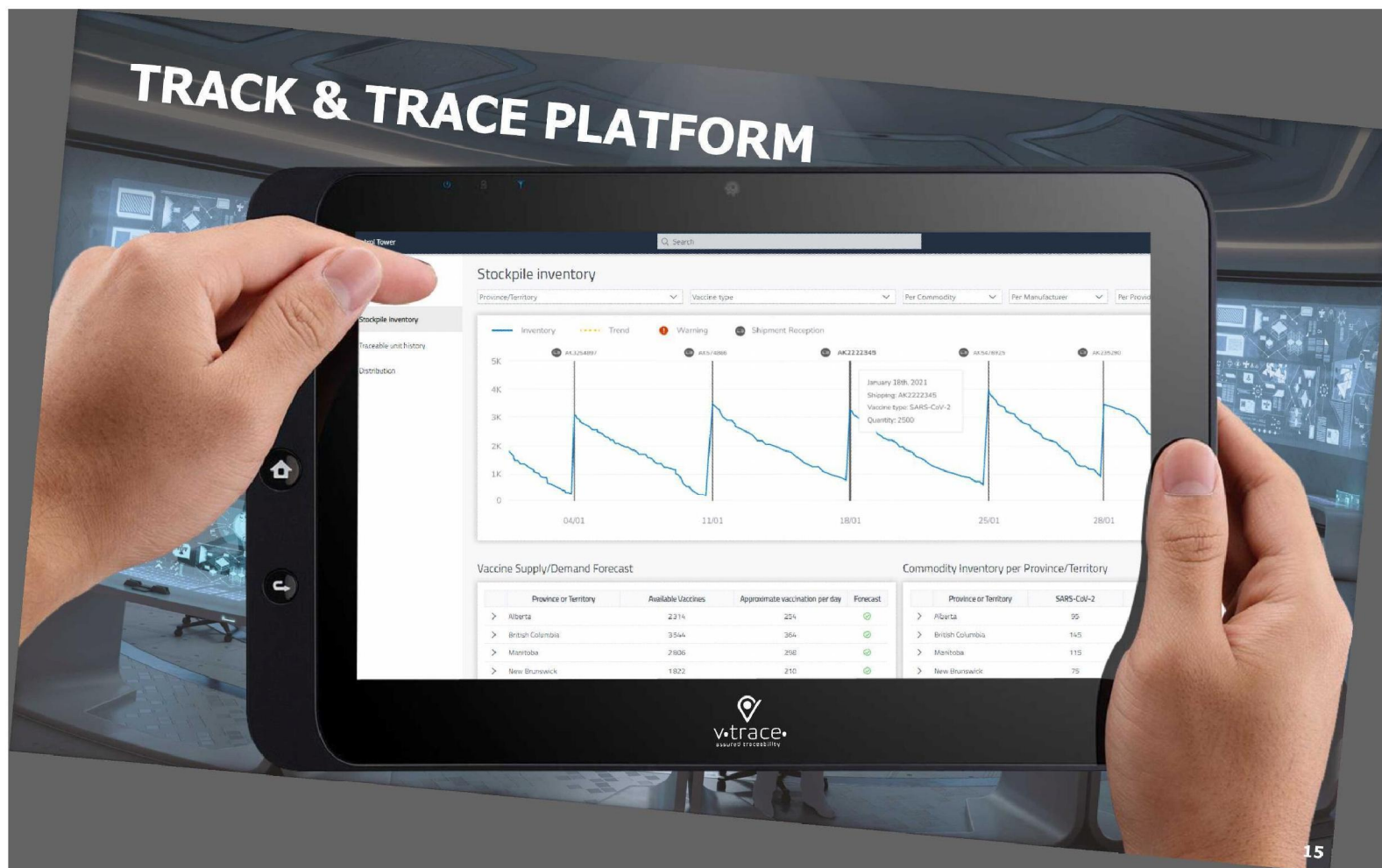
Integrate existing database

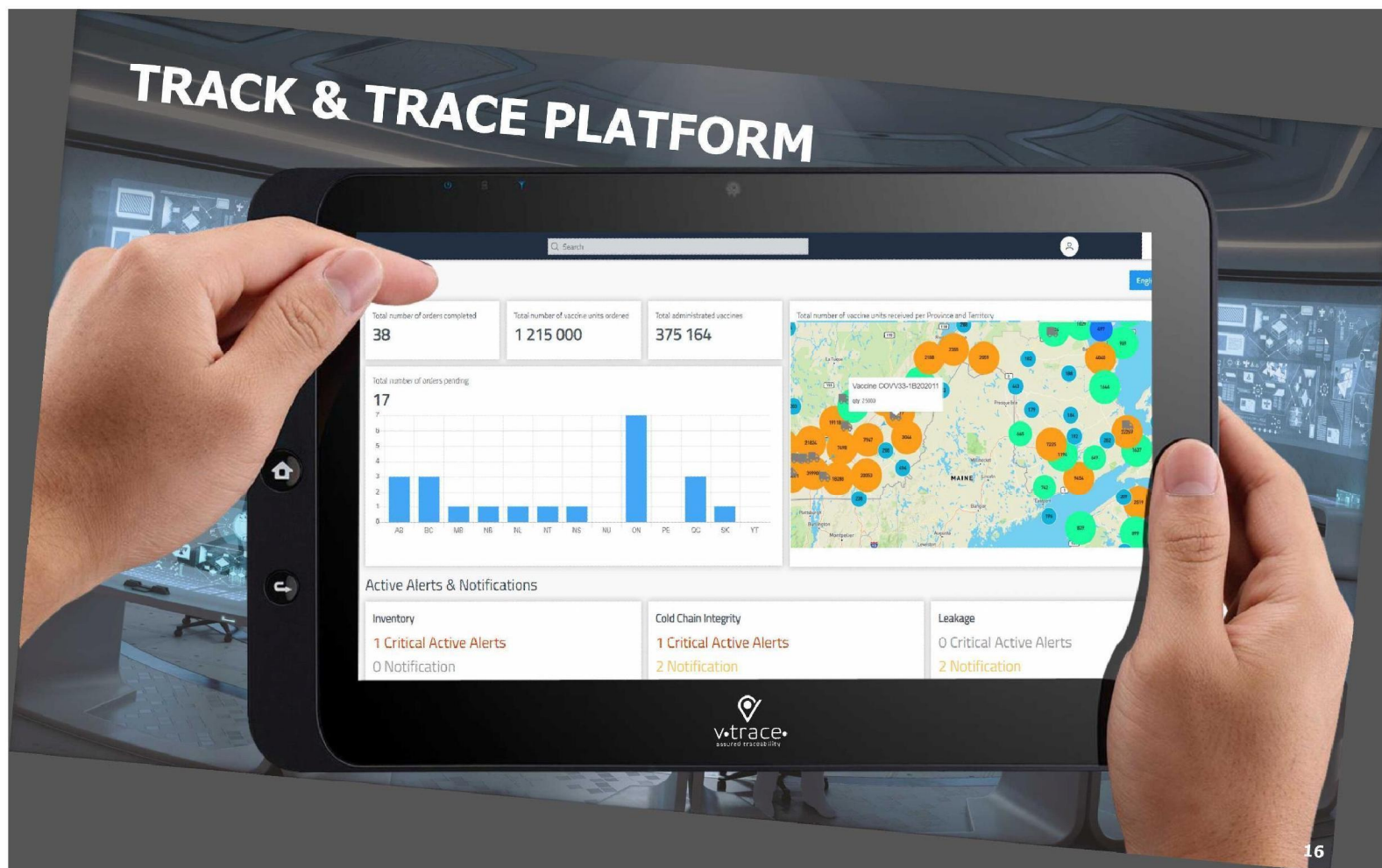
Trace real-time data from SKU level to chain of custody

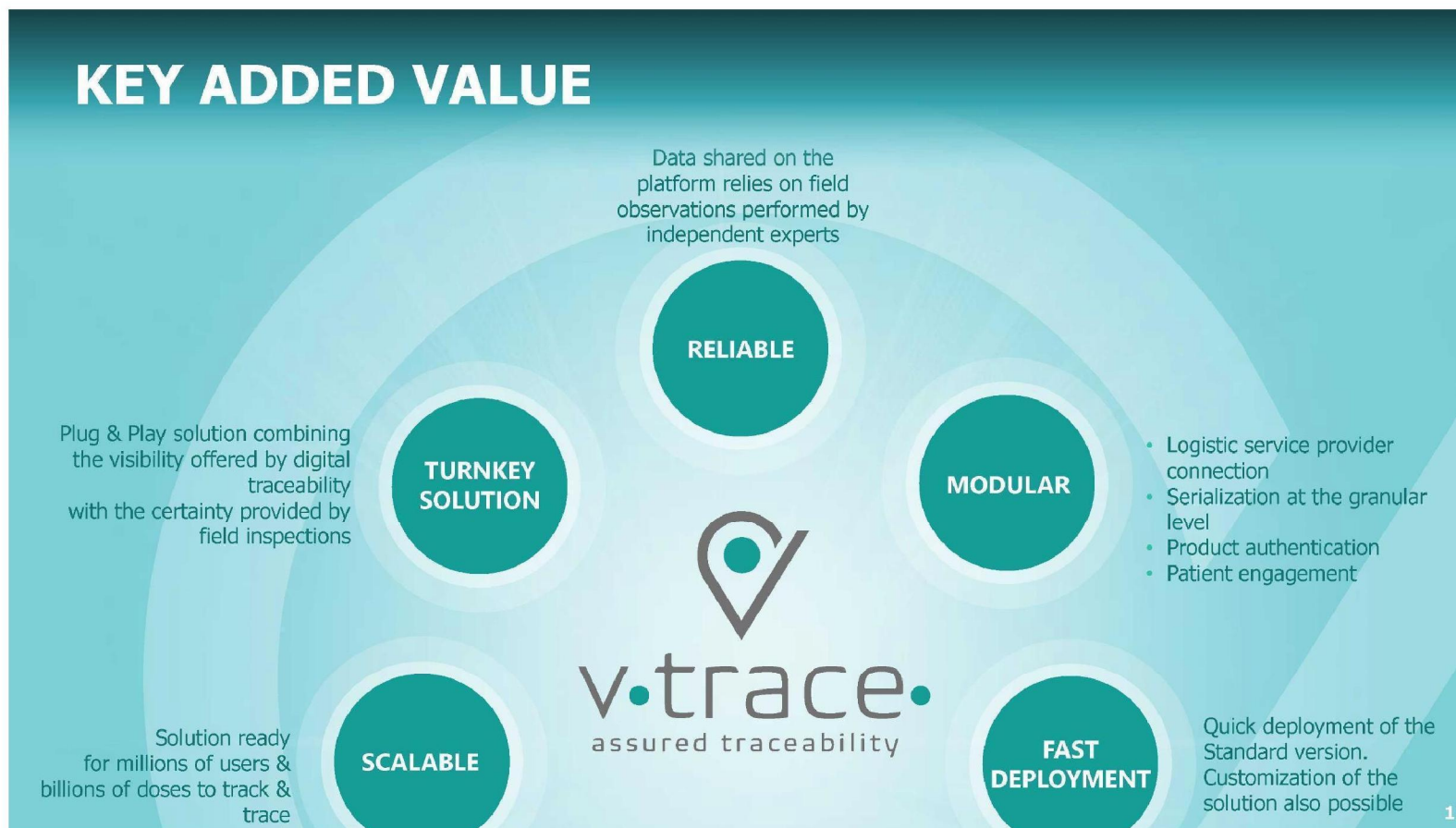
Intuitive dashboard and maps

Accessible from a computer or a smartphone









WHY IS V-TRACE A UNIQUE SOLUTION?

KNOWLEDGE OF THE PHARMACEUTICAL INDUSTRY

20 years of experience in the pharmaceutical supply chain

ALREADY ESTABLISHED IN THE MARKET

Experience with more than 80% of the top 30 pharmaceutical manufacturers

PROVEN TRACK RECORD

Currently tracking 6bn+ items/year, connecting 300k suppliers with 15m+ consumers

LEADERSHIP IN INSPECTION & CERTIFICATION

70+ accreditations / 145,000+ Certificates / Presence in 140+ countries

RECOGNIZED EXPERIENCE WITH GOVERNMENTS

Large international inspection contracts with dozens of Governments around the world

PLATFORM ALREADY IN PRODUCTION

Only requires to be configured and customization can be added on top



COMMERCIAL REFERENCE



CLIENT



COUNTRY

Brazil

SCOPE

End-to-end visibility platform

DESCRIPTION

- Deploy traceability and serialization
- Centralized platform connected to plants, suppliers, retailers and consumers
- Result : improved supply chain efficiency and reliability

COMMERCIAL REFERENCE



CLIENT

MCKESSON

COUNTRY

United Kingdom

SCOPE

Distribution channel monitoring

DESCRIPTION

- Deploy aggregation solution at case/pallet levels
- Connect to Government Healthcare database
- Result :
 - Real-time stock visibility combined with expiration dates
 - Traced more than 1M products per year in the UK

COMMERCIAL REFERENCE



CLIENT



COUNTRY

Manufacturing plants in 9 countries

SCOPE

Track-and-Trace Serialization

DESCRIPTION

- Serialize at the SKU level and manage aggregation
- Ensure a transparent integration in the production flow when connecting to actual ERP
- Provide visibility on product movement data that improves operational efficiencies
- Result :
 - Serialized 900M products per year
 - Improved planning accuracy, manufacturing efficiency and productivity, inventory levels and service levels
 - Revealed potential quality trends and detected suspicious activities

COMMERCIAL REFERENCE



CLIENT

Ministry of Health

COUNTRY

Libya

SCOPE

verification of conformity of exported products and devises
From worldwide manufacturers to Ministry of Health in Libya

DESCRIPTION

- Conformity of commercial doc and compliance to LC requirements
- Physical inspection of all cargos from origin up to MoH premises (Tripoli)
- Verification of batch numbers and full compliance to MoH standard requirements
- Issuance of certificate of conformity for each shipment.

COMMERCIAL REFERENCE



CLIENT

Ministry of Trade & Industry

COUNTRY

Iraq

SCOPE

verification of conformity of all imported products
From worldwide manufacturers/exporters to Iraq

DESCRIPTION

- Conformity of commercial doc and compliance to Iraqi standards requirements
- Physical inspection of all cargos from any origin up to Iraqi borders
- Documentary Verification at destination before clearance of each cargo
- Issuance of certificate of conformity for each shipment

COMMERCIAL REFERENCE



CLIENT

Saudi Arabia Standards Organization

COUNTRY

Saudi Arabia

SCOPE

verification of conformity of all imported products
From worldwide manufacturers/exporters to Saudi

DESCRIPTION

- Conformity of commercial doc and compliance to Saudi standards requirements
- Physical inspection of all cargos from any origin.
- Verification of any conformity data and authenticity of original documents.
- Issuance of certificate of conformity for each shipment

COMMERCIAL REFERENCE



SERVICE

Verification of conformity (VOC)

COUNTRY

Global

SCOPE

verification of conformity of all imported products
From worldwide manufacturers/exporters to destination

FIGURES

- Over 90 programmes run since 1975
- 25 government contracts running today
- More than 130 000 conformity certificates issued yearly.





ABOUT BUREAU VERITAS

BUREAU VERITAS



A LEADER OF THE TEST, INSPECTION AND CERTIFICATION MARKET







ABOUT OPTEL



OPTEL



A LEADING GLOBAL PROVIDER OF TRACEABILITY SYSTEMS



Founded in
1989



More than
15 years
of experience
in digital traceability



More than
28 years
of experience
in the pharmaceutical
supply chain



Experience with more than
80%
of the
top 30
pharmaceutical
manufacturers

Tracking
15 billion +
items / year

Connecting
500,000
suppliers

Engaging with
15m +
consumers

OPTEL'S PLATFORM TO CREATE A BETTER WORLD

END-TO-END TRACEABILITY SOLUTIONS

Providing true visibility across the entire supply chain, from the extraction of raw materials to the consumer

AN AWARDED COMPANY

On 16th Nov. 2020, the company won the "*Excellence in Digital Disruption*" award from the World Economic Forum

EXPERIENCE WITH GOVERNMENTS

Platform already connected with Government healthcare database

THE POWER OF OPTEL'S SERIALIZATION SYSTEM

OPTEL's advanced serialization system allows traceability at the granular level
Proven software and hardware solution deployed over 4000 pharmaceutical packaging lines